

ELDON HOUSE

2-3 Eldon Street, London EC2

Offices To Let

680-6,559 Sq Ft



Aberdeen Standard
Investments

A prominent, period office building comprising 44,087 sq ft of office accommodation over lower ground and 1st to 6th floors. The reception and common parts have undergone refurbishment to provide a modern welcoming entrance.

SPECIFICATION

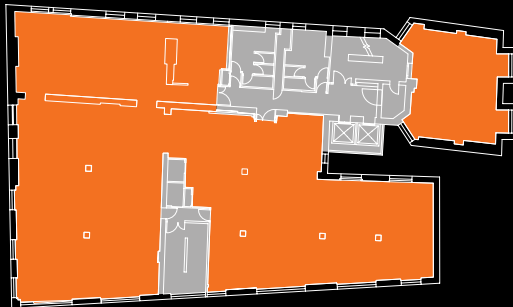
- 2 x 10 person passenger lifts
- Secure bike/storage/showers and locker room
- LG7 compliant lighting
- Air conditioning
- Security access control system
- Male & female WCs on each floor

LOCATION

The building occupies the corner of Eldon Street and Wilson Street, amongst the wide variety of restaurants and pubs that the City of London has to offer. Transport links are excellent, with both Moorgate and Liverpool Street stations within a two minute walk.

Floor	Sq Ft	Sq M
5th (Mezzanine)	685	63.5
4th	5,194	482.5
Ground (Mezzanine)	680	63.1
Total	6,559	609.1

4TH FLOOR PLAN – 5,194 SQ FT (482.5 SQ M)



Plan not to scale, for indicative purposes only



VIEWING

Through sole letting agents.

Harry Blanshard
hblanshard@jamesandrew.co.uk
020 3141 6602

Lisa Moran
lmoran@jamesandrew.co.uk
020 3141 6601



Subject to Contract. James Andrew International for themselves and the vendor of this property give notice that these particulars do not form, or form part of, any offer or contract. They are intended to give fair description of the property and whilst every effort has been made to ensure their accuracy this cannot be guaranteed. Any intending purchaser must therefore satisfy themselves by inspection or otherwise. Neither James Andrew International, nor any of its employees, has any authority to make or give any further representations or warranty whatsoever in relation to this property. All prices and rents quoted are net of VAT. September 2018.

Aberdeen Standard Investments is a brand of the investment businesses of Aberdeen Asset Management and Standard Life Investments.